

# Photoshop CEREAL BOX PROJECT

Check out these “Photoshop” cereal boxes. This was my inspiration!

So clever-- <http://www.photoshopcafe.com/contests/contest-6-finalists.htm>

## PLANNING

1. Come up with a **company name, logo, and colors** for your project. Your company logo must include a “unique font” and text warping; shape is optional, but below would be an idea to use as a shape.  
(Be creative)

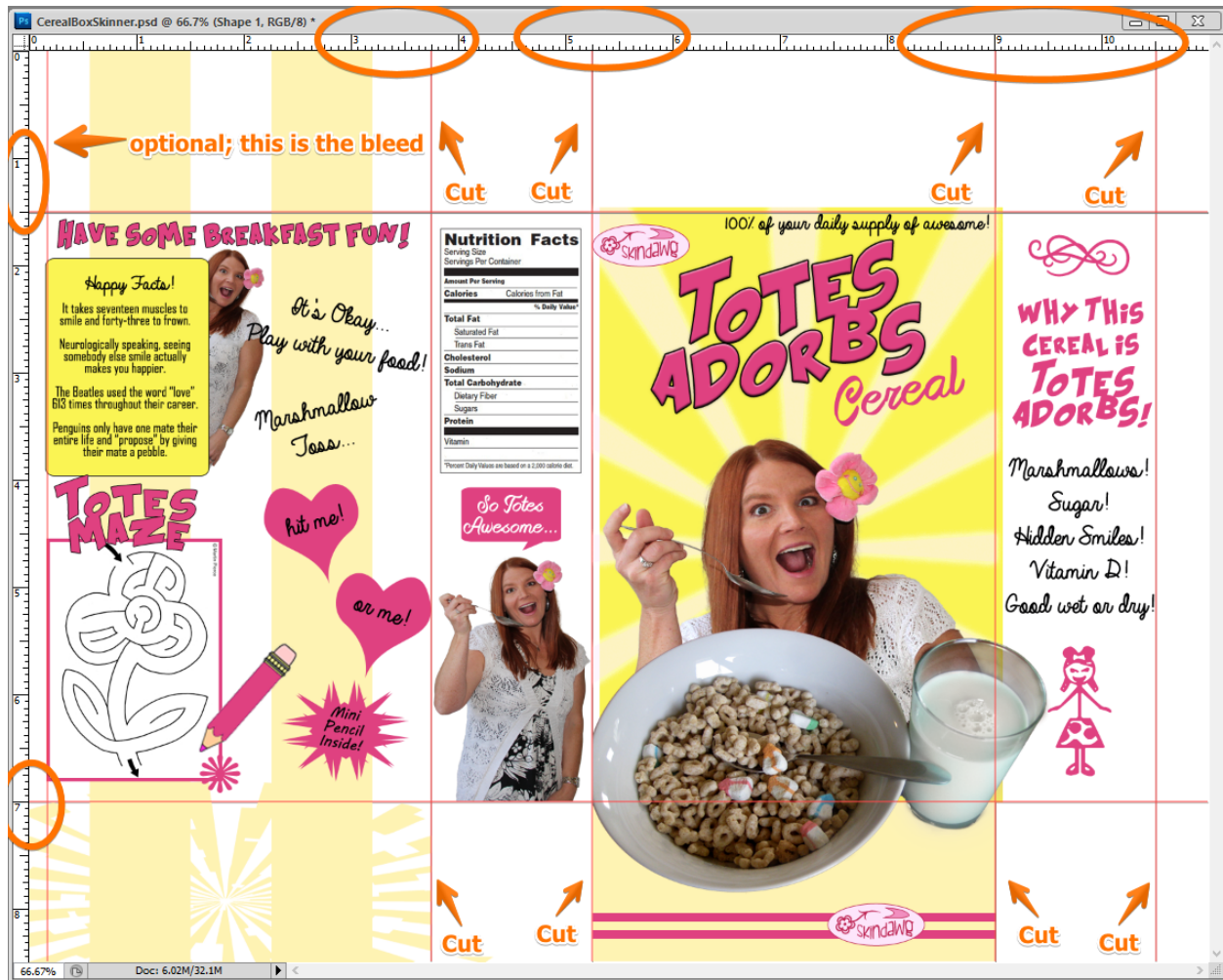


Example→

2. Decide on a **slogan** for your cereal.
3. Design the **cover** for your cereal box or package. This includes **front, back, and sides**. You must have:
  - Nutrition label and ingredient list (side)
  - Other information/pictures about the cereal (side)
  - Picture of cereal (front)
  - Activity and/or games to play or information on free prize inside (back)

CONTINUED ON NEXT PAGE

Page Setup—Create a Full Letter Landscape size document—US Paper/Letter 11 x 8 1/2”



- Set Vertical guides at 3.75”, 5.25”, 9”, and 10.5”. There is an edge you can’t print to so you might drag a guide at .25” or so, but that’s optional. Do not cut there!
- Set Horizontal guides at 1.5” and 7”.

